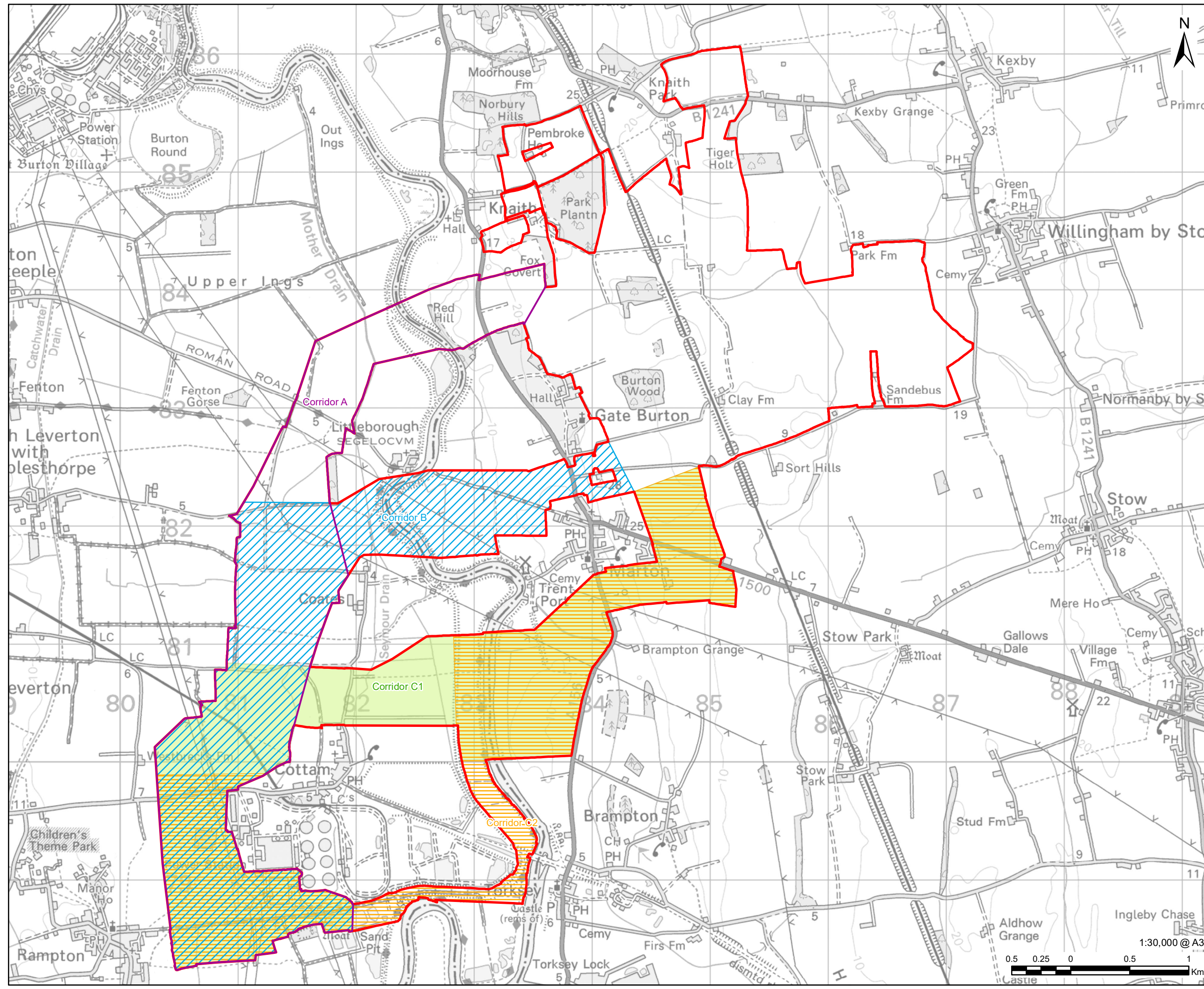


Revision: 01 Drawn: NK Checked: RW Approved: WB Date: 2022-11-23
 Filename: \\na.aecom.com\ms\EMEACroydon\UKCRD1\Legacy\UKCRD1\FP001-V1\IE\projects\general\GIS\Projects\Gate Burton Energy Park\Map2\Environmental Statement\Chapter 03 - Alternatives and Design Evolution\EVO_ES_Figure 3_3_Alternative Cable Routes.mxd



AECOM
 PROJECT
 Gate Burton Energy Park

CLIENT

 Gate Burton
 ENERGY PARK

CONSULTANT
 AECOM Limited
 Sunley House
 4 Bedford Park
 Surrey, CR0 2AP, UK
 www.aecom.com

LEGEND

- EIA Scoping Site Boundary
- Corridor A
- Corridor B
- Corridor C1
- Corridor C2

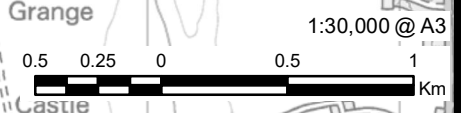
NOTES
 © Crown copyright and database rights
 2022. Ordnance Survey 0100031673.

ISSUE PURPOSE
 Environmental Statement

PROJECT NUMBER
 60664324

FIGURE TITLE
 Alternative Cable Route Corridors

FIGURE NUMBER
 Figure 3-3



This drawing has been prepared for the use of AECOM's client. It may not be used, modified, reproduced or relied upon by third parties, except as agreed by AECOM or as required by law. AECOM accepts no responsibility, and denies any liability whatsoever, to any party that uses or relies on this drawing without AECOM's express written consent. Do not scale this document. All measurements must be obtained from the stated dimensions.